

Survey Area Boundaries

Overhead and Underground route*

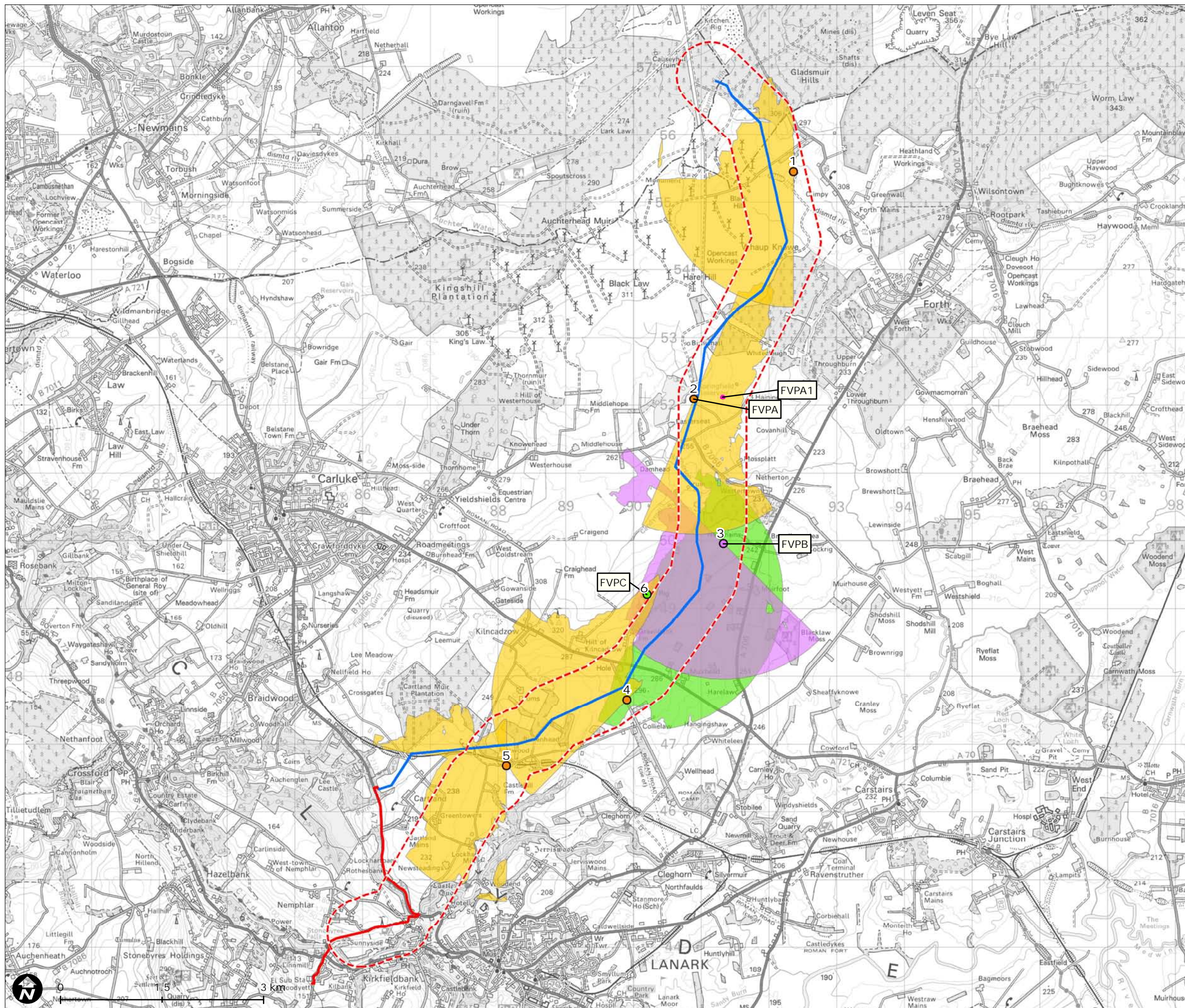
- 500m buffer survey area
- 1km buffer survey area
- 1.5km buffer survey area
- 2km buffer survey area

- Overhead Line
- Underground Cable

*As advised February 2011

Figure 9.1
 Map Scale @ A3: 1:65,000

Reproduced from Ordnance Survey digital map data © Crown copyright 2012. All rights reserved. Licence numbers 100047514, 0100031673.



Generic Vantage Point Locations and Viewsheds and Location of Focal Vantage Points

March 2011 - March 2012

- Generic Vantage Points 1,2,4,5

Viewshed

March 2011 - July 2011

- Generic Vantage Point 3

Viewshed

August 2011 - March 2012

- Generic Vantage Point 6

Viewshed

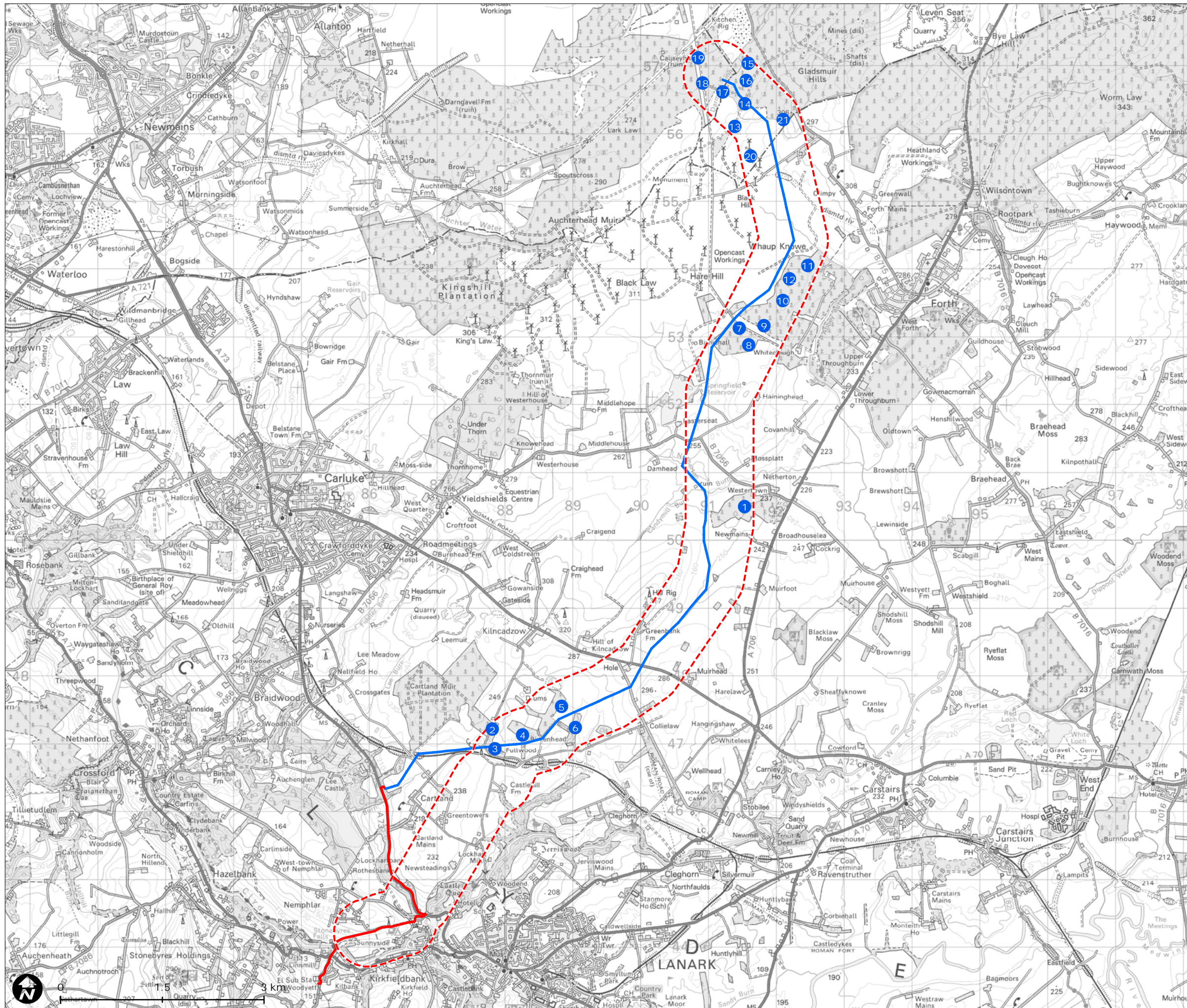
500m Buffer Survey Area (SA1)

Overhead Line

Underground Cable

Figure 9.2

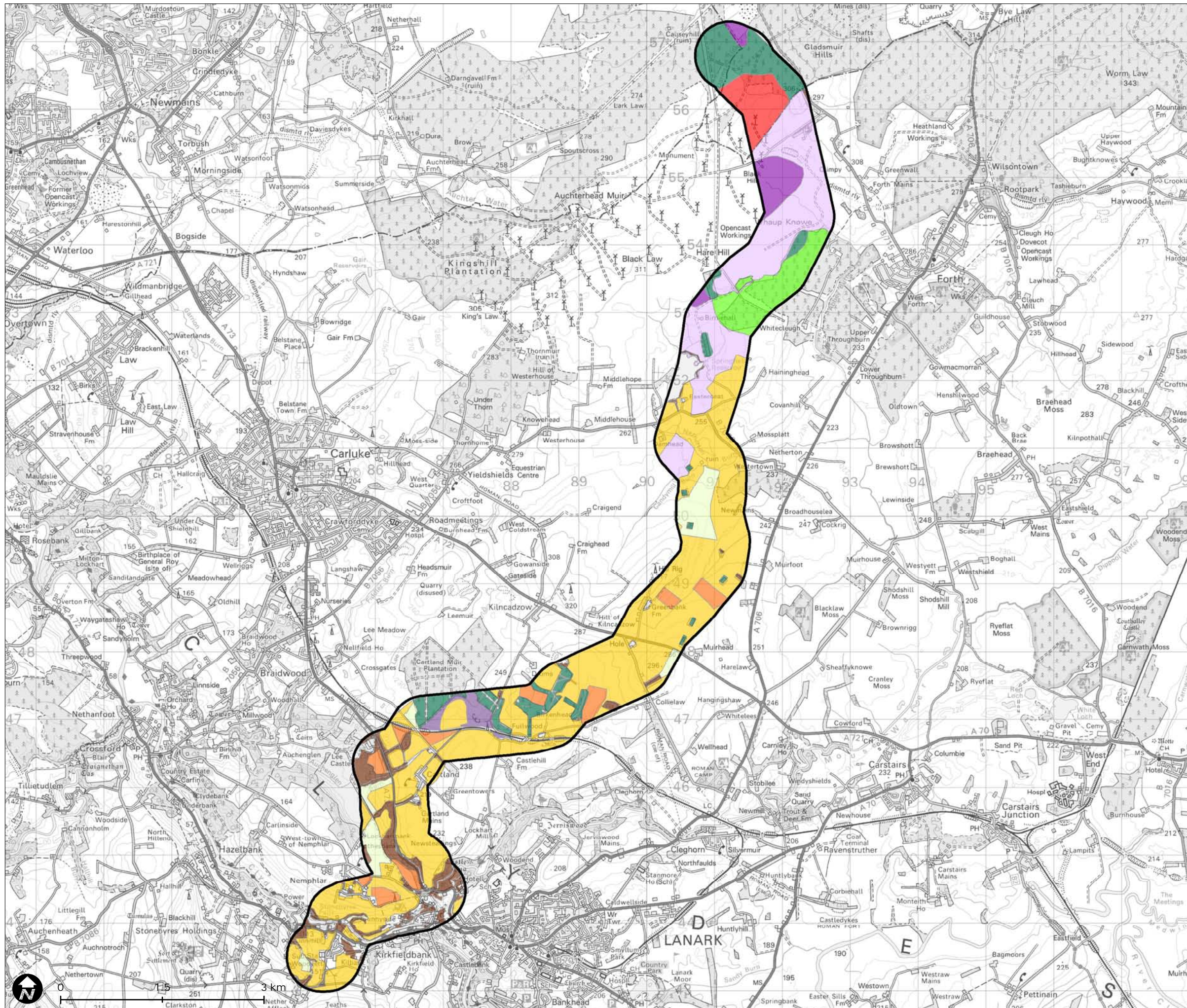
Map Scale @ A3: 1:55,000



Woodland Count Point Locations

- WCP location
- 500m Buffer Survey Area (SA1)
- Overhead Line
- Underground Cable

Figure 9.3
Map Scale @ A3: 1:55,000



Ornithological Habitat Map






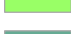



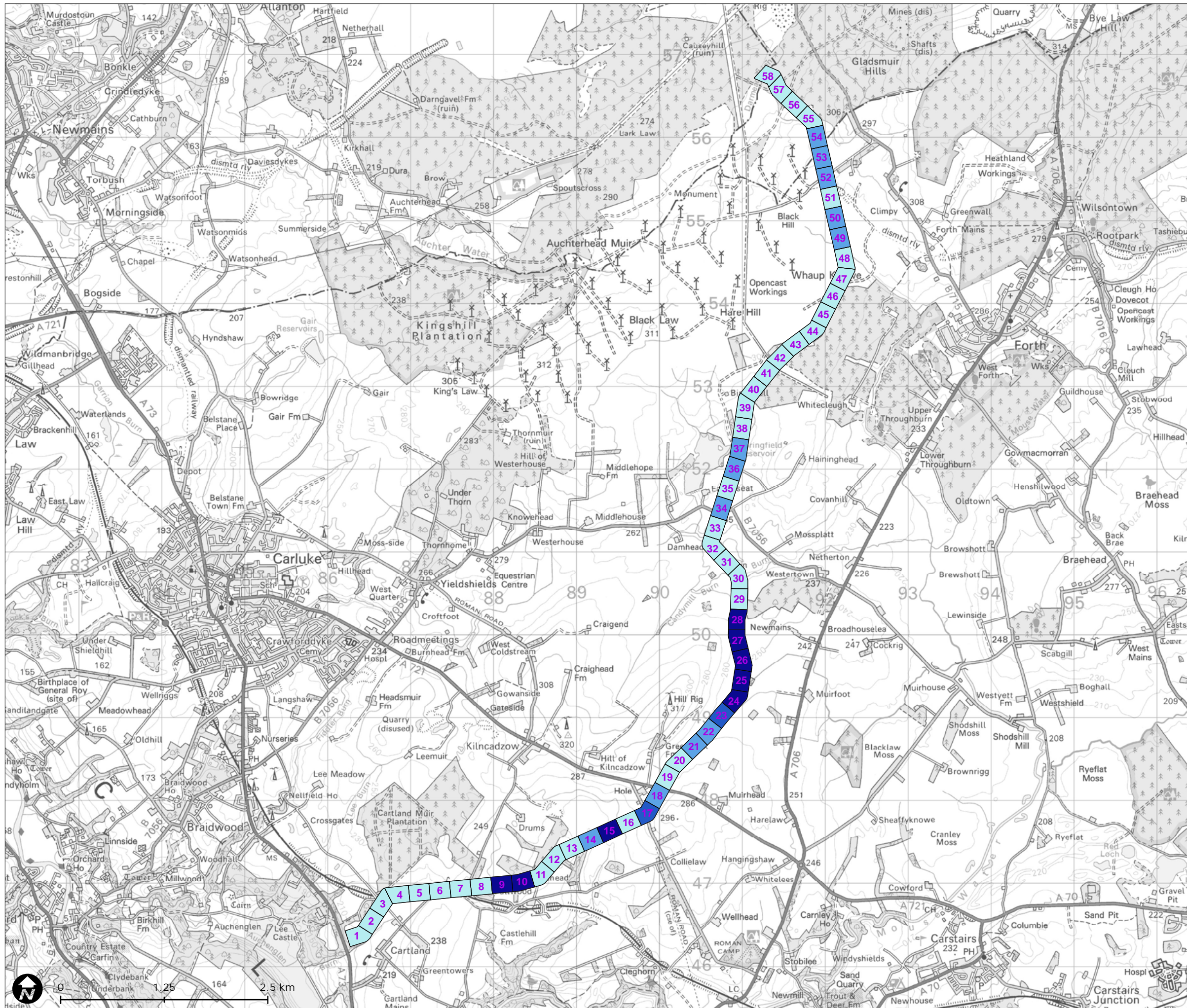
-  Development 500m buffer
- Habitat
-  Grass moor
-  Heath/Bog incl. tall heather
-  Neglected pasture
-  Recently improved grass pasture
-  Arable
-  Establishment forest
-  Thicket stage forest
-  Clear felled forest
-  Scrub
-  Mixed/broad-leaved woodland

Figure 9.4
Map Scale @ A3: 1:55,000



SP TRANSMISSION
Black Law Grid Connection

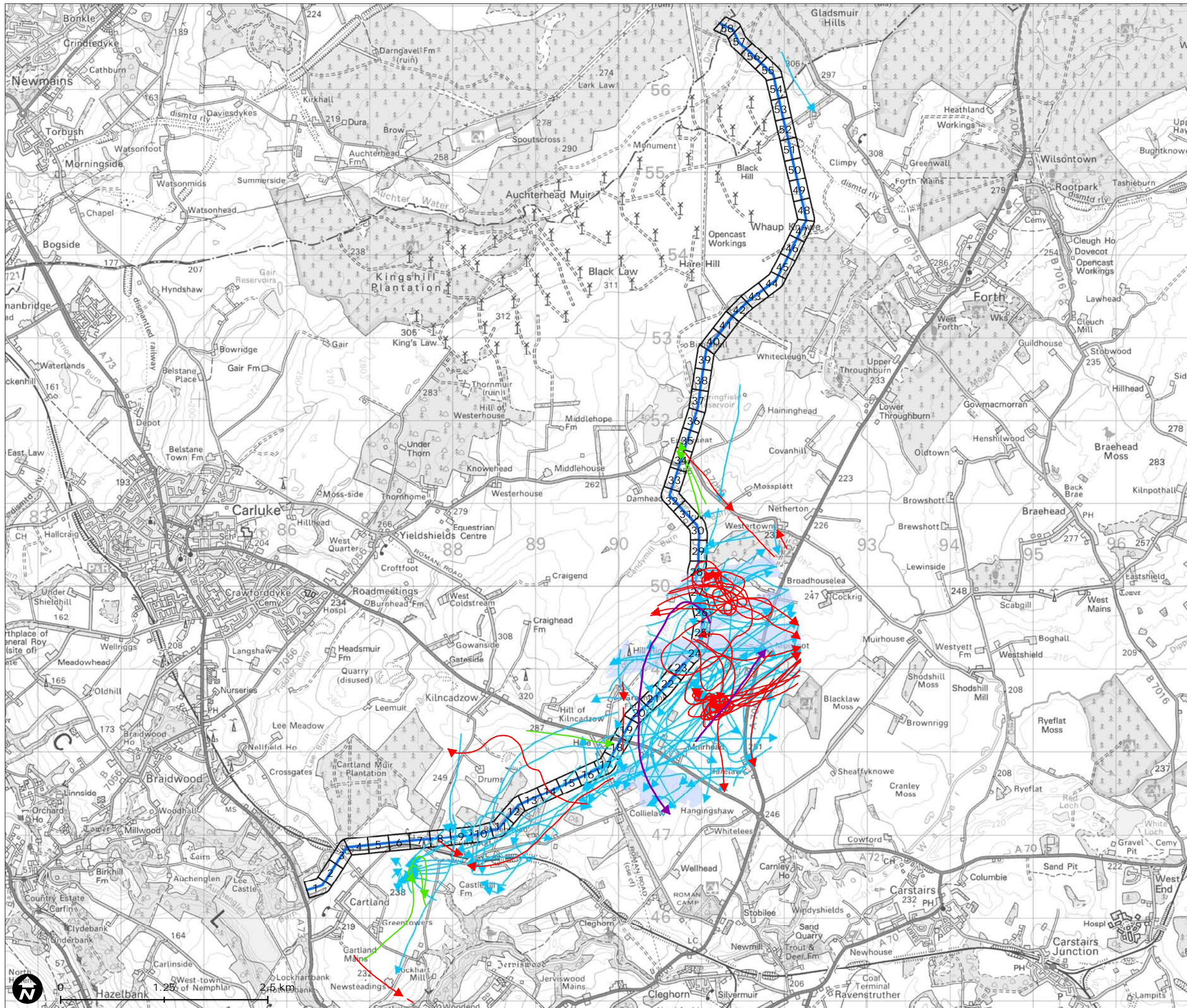
Transit Rates for Pink-Footed Goose and Curlew through 250m Segments

Transit Rate (Crossings Per Hour)

- No transits
- Low (1-20)
- Medium (20-50)
- High (50+)
- Development 100m Buffer

Figure 9.5
 Map Scale @ A3: 1:45,000

LUC **n r p** NATURAL RESEARCH PROJECTS LIMITED

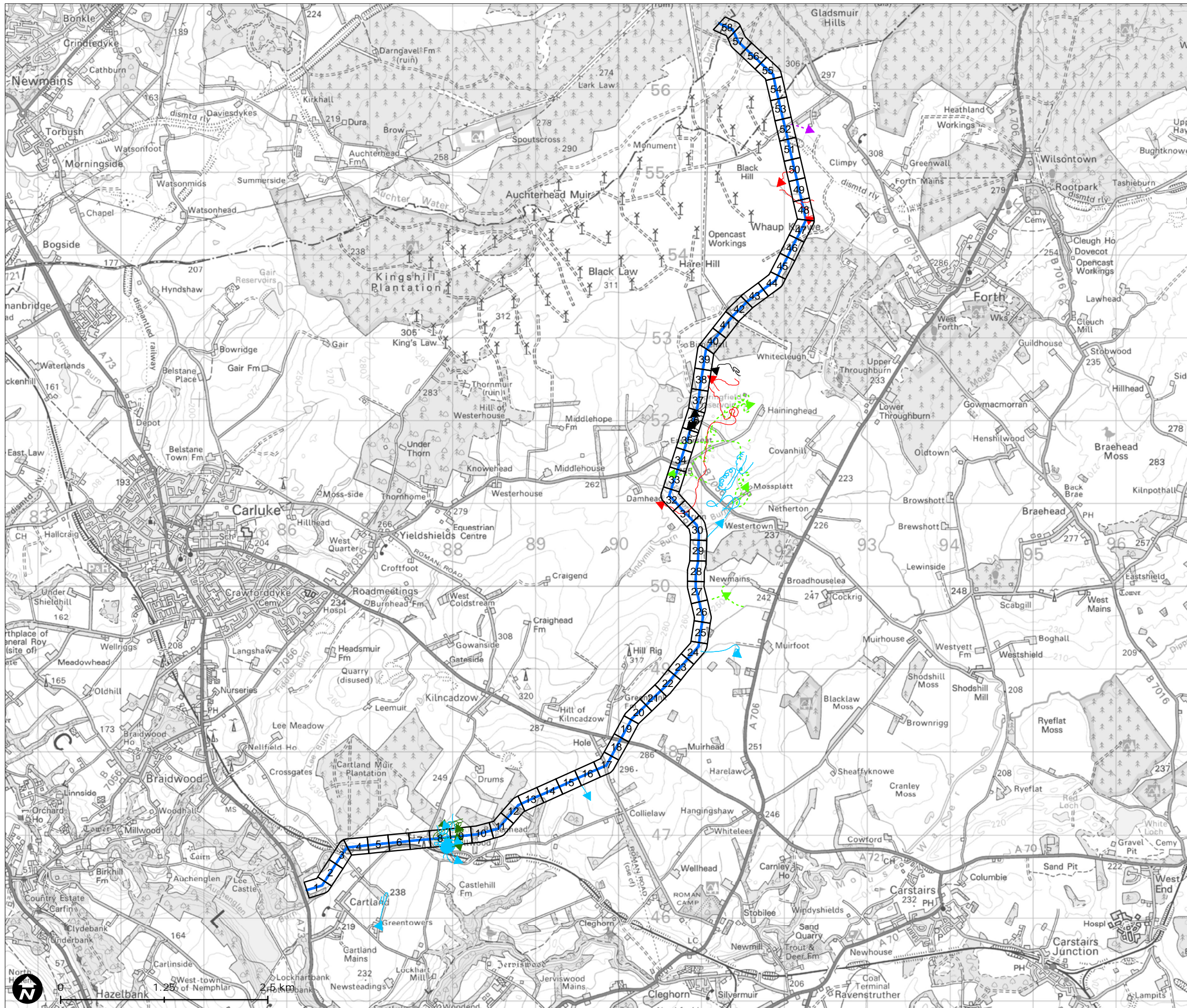


Pink-footed Goose Flight Activity from Generic and Focal Vantage Points*

- Flight Lines**
- March 2011 - April 2011
 - September 2011 - November 2011
 - December 2011 - February 2012
 - March 2012
- Flight Area**
- September 2011 - November 2011
 - Development 100m buffer
 - Overhead Line

*Flights are clipped to relevant 2km viewsheds

Figure 9.6
Map Scale @ A3: 1:45,000



Raptor Flight Activity from Generic Vantage Points*

March 2011 and September 2011 - March 2012

- ▶ Goshawk
- ▶ Peregrine
- ▶ Hen harrier
- ▶ Short-eared owl

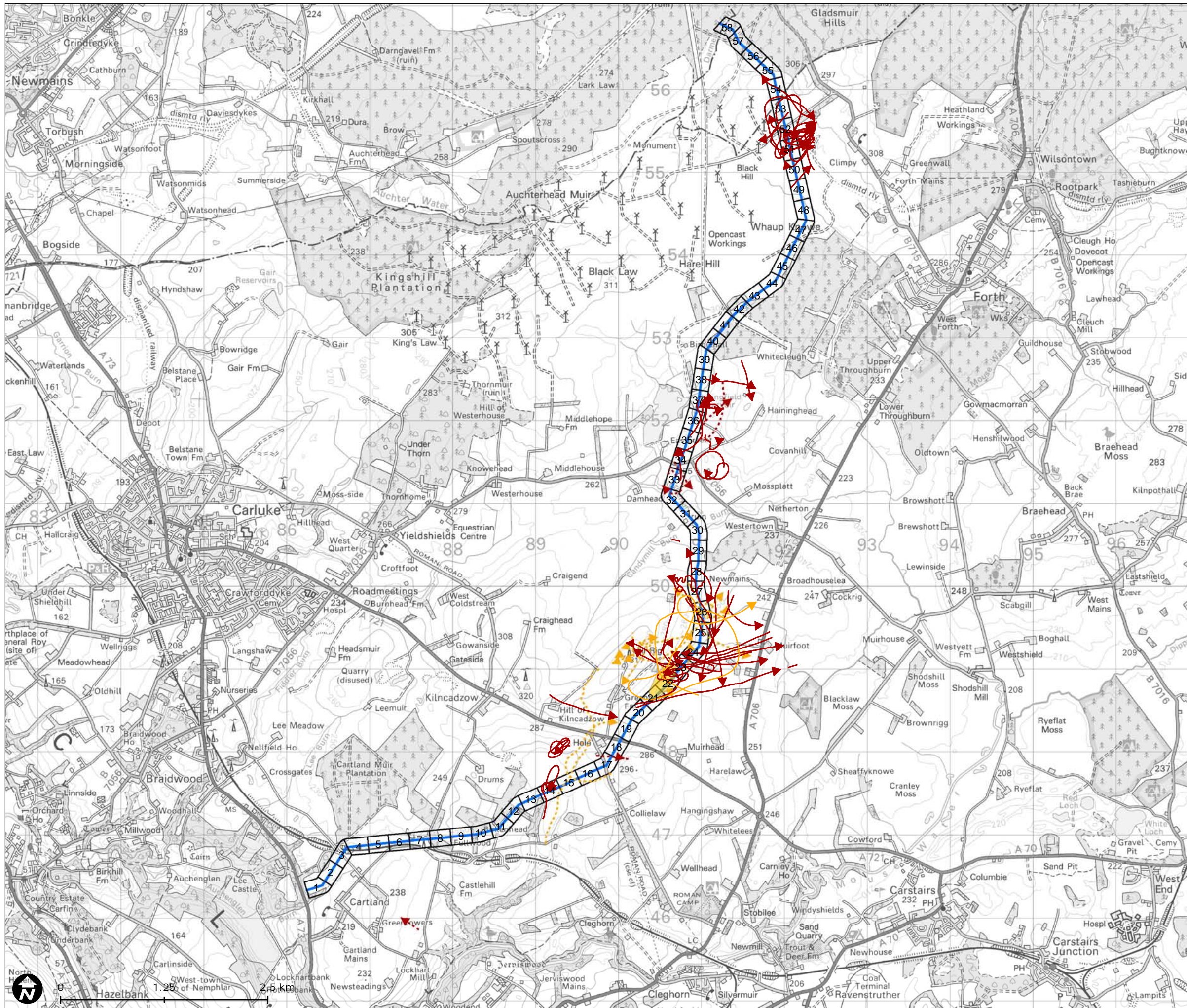
April 2011 - August 2011

- ▶ Merlin
- - - ▶ Peregrine
- Development 100m buffer
- Overhead Line

*Flights are clipped to relevant 2km viewsheds

Figure 9.7

Map Scale @ A3: 1:45,000



Wader Flight Activity from Generic and Focal Vantage Points*

March 2011 and September 2011 - March 2012

- > Curlew
- > Golden plover
- Golden plover Flight Area
- April 2011 - August 2011
- > Curlew
- > Golden plover
- Development 100m buffer
- Overhead Line

*Flights are clipped to relevant 2km viewsheds

Figure 9.8

Map Scale @ A3: 1:45,000



Breeding Bird Territories

- Confirmed
- * Buzzard
 - ▲ Curlew
 - Grasshopper warbler
 - * Kestrel
 - Reed bunting
 - ▲ Snipe
 - Starling
- Probable
- ★ Reed bunting
- 500m buffer survey area 2011
- Overhead Line

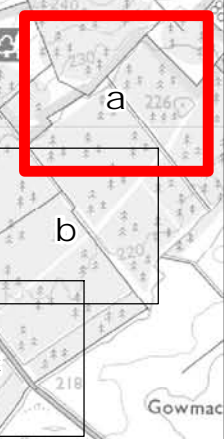
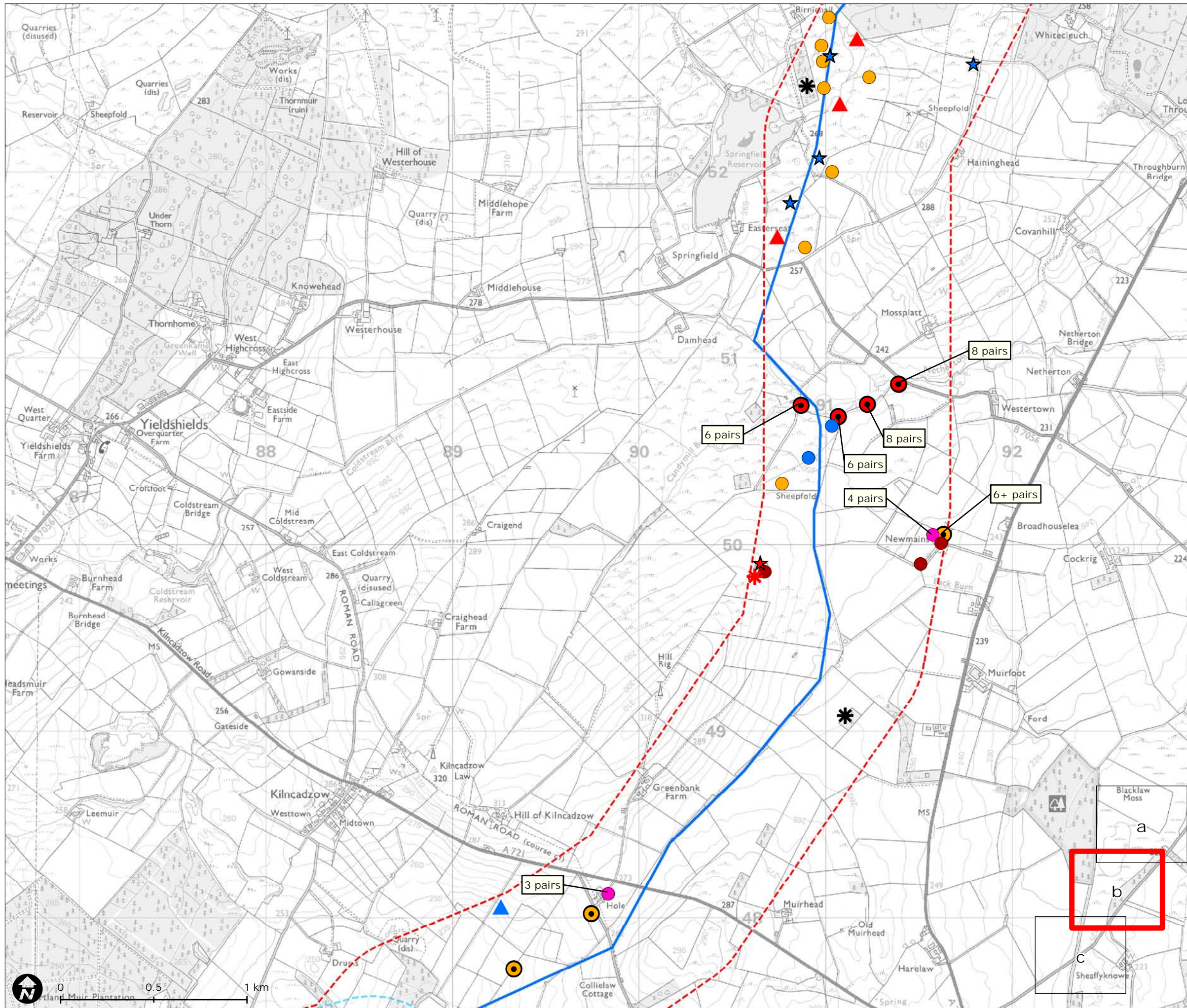


Figure 9.9a
Map Scale @ A3: 1:20,000

Reproduced from Ordnance Survey digital map data © Crown copyright 2012. All rights reserved. Licence numbers 100047514, 0100031673.



SP TRANSMISSION
Black Law Grid Connection

Breeding Bird Territories

Confirmed

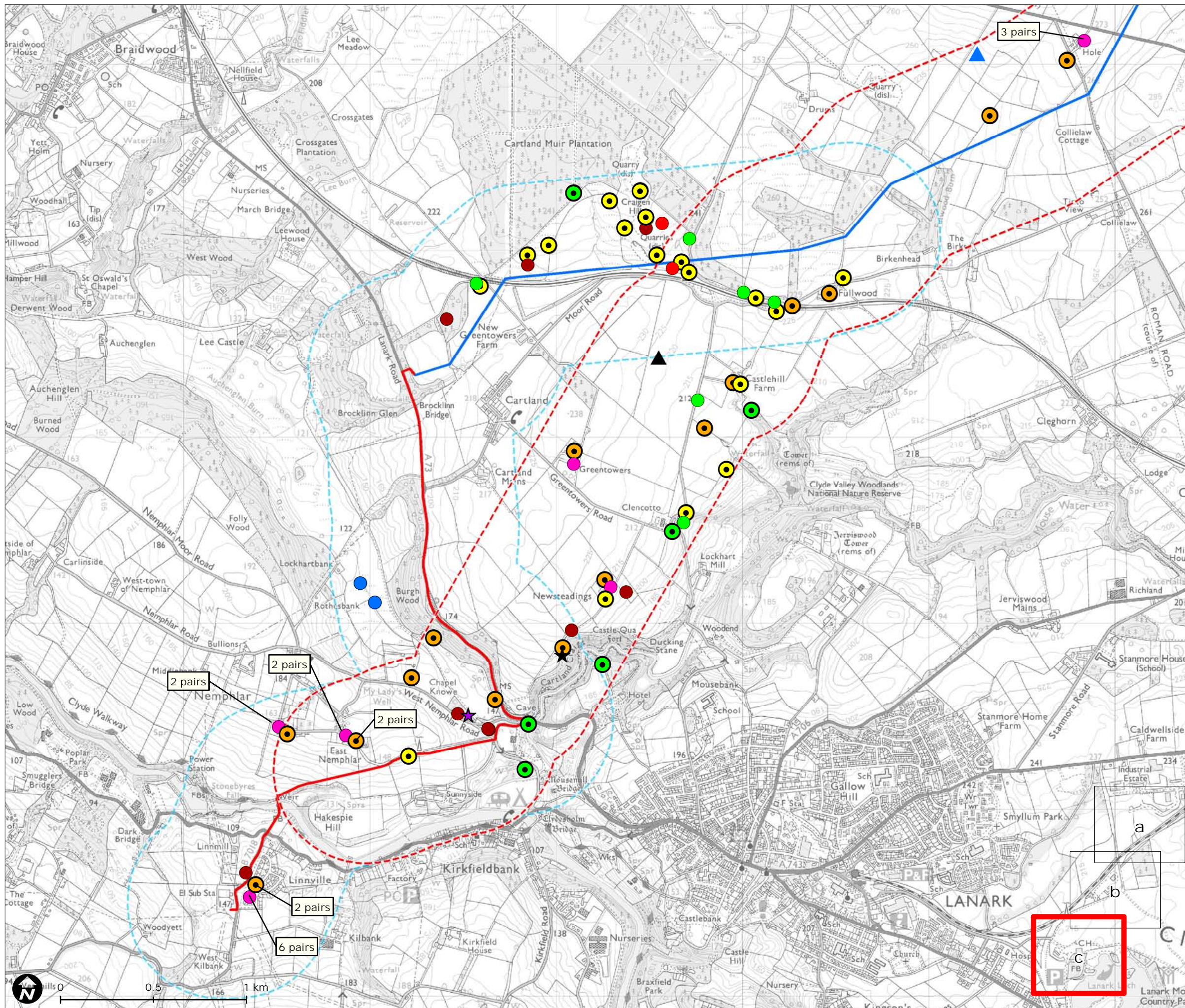
- * Buzzard
- ▲ Curlew
- Dunnock
- Grasshopper warbler
- House sparrow
- * Kestrel
- Reed bunting
- Sand Martin
- ▲ Snipe
- Starling

Probable

- ★ Lesser redpoll
- ★ Reed bunting
- 500m buffer May 2012 survey
- 500m buffer survey area 2011
- Overhead Line

Figure 9.9b
 Map Scale @ A3: 1:20,000

LUC **n r p** NATURAL RESEARCH PROJECTS LIMITED



Breeding Bird Territories

Confirmed

- ▲ Curlew
- Dunnock
- House sparrow
- Lesser redpoll
- Linnet
- ▲ Quail
- Reed bunting
- Song thrush
- Starling
- Yellowhammer

Probable

- ★ Bullfinch
- ★ Spotted flycatcher
- 500m buffer May 2012 survey
- 500m buffer survey area 2011
- Overhead Line
- Underground Cable

Figure 9.9c

Map Scale @ A3: 1:20,000